

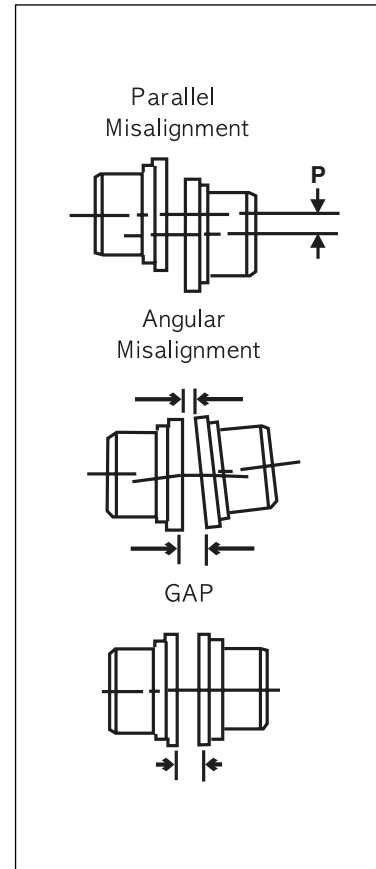
KCP Grid Coupling



fig. 3 misalignment capacity

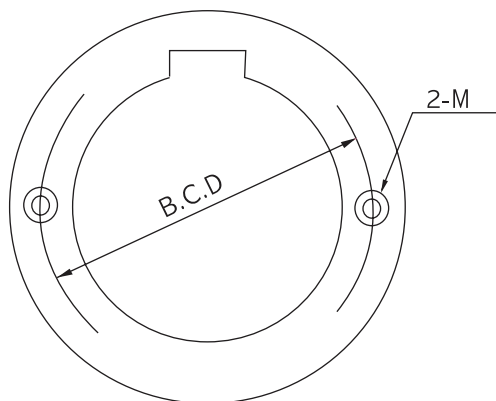
(Unit : mm)

Size	Recommended installation		Operating		Normal gap $\pm 10\%$
	Parallel offset p	Angular($1/16^\circ$) X - Y	Parallel offset p	Angular($1/4^\circ$) X - Y	
1020	0.15	0.08	0.3	0.25	3
1030	0.15	0.08	0.3	0.30	3
1040	0.15	0.08	0.3	0.33	3
1050	0.20	0.10	0.4	0.41	3
1060	0.20	0.13	0.4	0.46	3
1070	0.20	0.13	0.4	0.51	3
1080	0.20	0.15	0.4	0.61	3
1090	0.20	0.18	0.4	0.71	3
1100	0.25	0.20	0.5	0.84	5
1110	0.25	0.23	0.5	0.91	5
1120	0.28	0.25	0.56	1.02	6
1130	0.28	0.30	0.56	1.19	6
1140	0.28	0.33	0.56	1.35	6
1150	0.30	0.41	0.6	1.57	6
1160	0.30	0.46	0.6	1.78	6
1170	0.30	0.51	0.6	2.01	6
1180	0.38	0.56	0.76	2.26	6
1190	0.38	0.61	0.76	2.46	6
1200	0.38	0.69	0.76	2.72	6



The life of coupling is reduced by excess of the limit.

8. Specification of Puller Holes)



CPLG Size	B.C.D. (mm)	Bolt Size	CPLG Size	B.C.D. (mm)	Bolt Size
1070	74	M8	1150	227.5	M20
1080	89.5	M8	1160	260	M20
1090	106	M10	1170	306	M24
1100	121.5	M10	1180	341	M30
1110	136.5	M10	1190	373	M30
1120	150.5	M12	1200	414	M30
1130	185	M16	1210	540	M30
1140	205	M16	1220	570	M30

NB. Finer Power stocks up to 1150