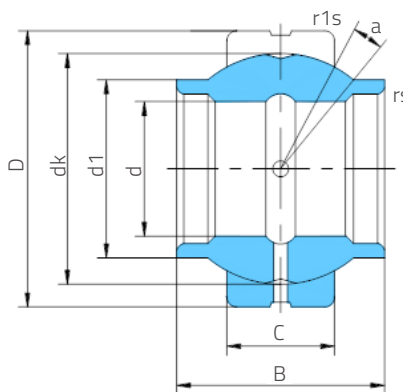
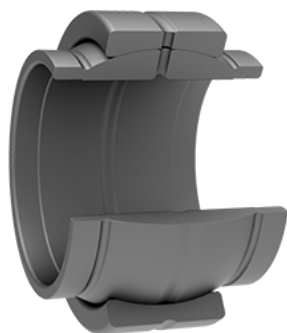


Spherical Plain Bearings

Radial Wide Inner Ring

The inner ring has protruding cylindrical extensions at both ends, and the outer ring features an axial groove. Both rings are made of bearing steel, the sliding surface coated with molybdenum disulfide.



GEEW Series

Bearing number	Dimensions (mm/inch)									Load ratings (kN)		Weight (kg)
	d	D	B	C	d1	dk	rs min	r1s min	a° ≈	Dynamic	Static	
GEEW20ES-2RS	20	35	20	12	25	29	0.3	0.3	4	30	146	0.069
GEEW25ES-2RS	25	42	25	16	30.5	35.5	0.6	0.6	4	48	240	0.124
GEEW30ES-2RS	30	47	30	18	34	40.7	0.6	0.6	4	62	310	0.159
GEEW35ES-2RS	35	55	35	20	40	47	0.6	1	4	79	399	0.248
GEEW40ES-2RS	40	62	40	22	46	53	0.6	1	4	99	495	0.349
GEEW45ES-2RS	45	68	45	25	52	60	0.6	1	4	127	637	0.468
GEEW50ES-2RS	50	75	50	28	57	66	0.6	1	4	156	780	0.62
GEEW60ES-2RS	60	90	60	36	68	80	1	1	4	245	1220	1.11
GEEW70ES-2RS	70	105	70	40	78	92	1	1	4	313	1560	1.69
GEEW80ES-2RS	80	120	80	45	91	105	1	1	4	400	2000	2.55
GEEW90ES-2RS	90	130	90	50	99	115	1	1	4	488	2440	3.04
GEEW100ES-2RS	100	150	100	55	113	130	1	1	4	607	3030	4.87