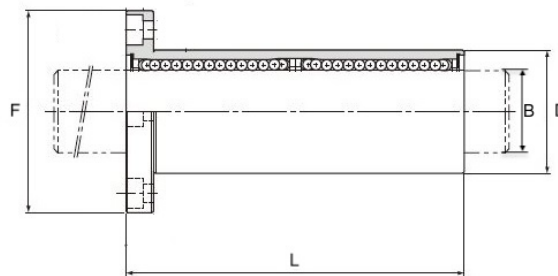


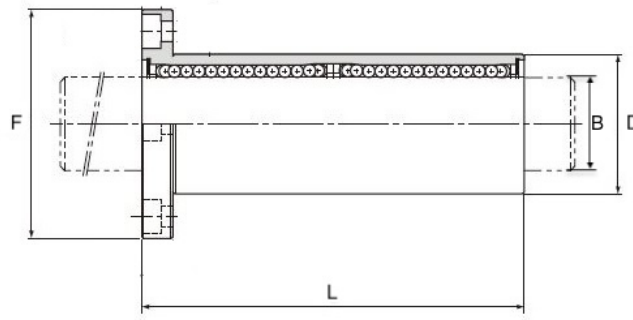
LM Series - Japanese Standard (Metric)

Part No.	Ball Circuit	Weight (g)	Dimensions			Tolerance	
			D(mm)	L (mm)	B (mm)	Precision J	Precision P
LM8UU	4	15	15	24	8	0 - (-6)	0 - (-9)
LM10UU	4	29.5	19	29	10	0 - (-6)	0 - (-9)
LM12UU	4	31.5	21	30	12	0 - (-6)	0 - (-9)
LM16UU	5	69	28	37	16	0 - (-6)	0 - (-9)
LM20UU	5	87	32	42	20	0 - (-7)	0 - (-10)
LM25UU	5	220	40	59	25	0 - (-7)	0 - (-10)
LM30UU	6	250	45	64	30	0 - (-7)	0 - (-10)
LM40UU	6	585	60	80	40	0 - (-8)	0 - (-12)



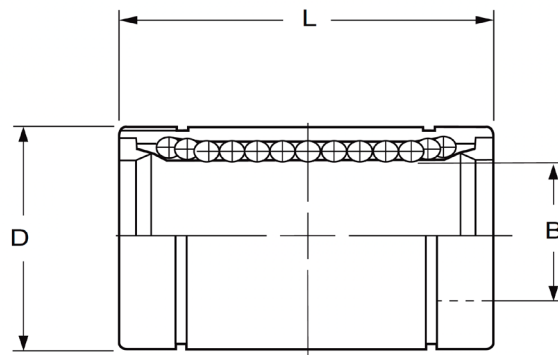
LMF Series - Flanged Japanese Standard (Metric)

Part No.	Ball Circuit	Weight (g)	Dimensions				Eccentricity (max) μm	Radial Clearance (max) μm	Basic Load Rating		Tolerance (μm)
			D(mm)	L (mm)	B (mm)	F (mm)			C (N)	Co (N)	
LMF8UU	4	51	15	24	8	32	15	-3	431	784	0 - (-10)
LMF8LUU	4	51	15	45	8	32	15	-3	431	784	0 - (-10)
LMF10UU	4	98	19	29	10	39	15	-4	588	1100	0 - (-10)
LMF10LUU	4	98	19	55	10	39	15	-4	588	1100	0 - (-10)
LMF12UU	4	110	21	30	12	42	15	-4	667	1220	0 - (-10)
LMF12LUU	4	110	21	57	12	42	15	-4	667	1220	0 - (-10)
LMF16UU	5	190	28	37	16	48	15	-6	1230	2350	0 - (-10)
LMF16LUU	5	190	28	70	16	48	15	-6	1230	2350	0 - (-10)
LMF20UU	5	260	32	42	20	54	20	-6	1400	2740	0 - (-12)
LMF20LUU	5	260	32	80	20	54	20	-6	1400	2740	0 - (-12)
LMF25UU	6	540	40	59	25	62	20	-6	1560	3140	0 - (-12)
LMF25LUU	6	540	40	112	25	62	20	-6	1560	3140	0 - (-12)
LMF30UU	6	680	45	64	30	74	20	-8	2490	5490	0 - (-12)
LMF30LUU	6	680	45	123	30	74	20	-8	2490	5490	0 - (-12)
LMF40UU	6	1570	60	80	40	96	25	-10	3430	8040	0 - (-15)
LMF40LUU	6	1570	60	154	40	96	25	-10	3430	8040	0 - (-15)



LMK Series - Square Flanged Japanese Standard (Metric)

Part No.	Ball Circuit	Weight (g)	Dimensions				Eccentricity (max) μm	Radial Clearance (max) μm	Basic Load Rating		Tolerance (μm)
			D(mm)	L (mm)	B (mm)	F (mm)			Dynamic C (N)	Static Co (N)	
LMK10UU	4	98	19	29	10	39	15	-4	588	1100	0 - (-10)
LMK10LUU	4	98	19	55	10	39	15	-4	588	1100	0 - (-10)
LMK12UU	4	110	21	30	12	42	15	-4	667	1220	0 - (-10)
LMK12LUU	4	110	21	57	12	42	15	-4	667	1220	0 - (-10)
LMK16UU	5	190	28	37	16	48	15	-6	1230	2350	0 - (-10)
LMK16LUU	5	190	28	70	16	48	15	-6	1230	2350	0 - (-10)
LMK20UU	5	260	32	42	20	54	20	-6	1400	2740	0 - (-12)
LMK20LUU	5	260	32	80	20	54	20	-6	1400	2740	0 - (-12)
LMK25UU	6	540	40	59	25	62	20	-6	1560	3140	0 - (-12)
LMK25LUU	6	540	40	112	25	62	20	-6	1560	3140	0 - (-12)
LMK30UU	6	680	45	64	30	74	20	-8	2490	5490	0 - (-12)
LMK30LUU	6	680	45	123	30	74	20	-8	2490	5490	0 - (-12)
LMK40UU	6	1570	60	80	40	96	25	-10	3430	8040	0 - (-15)
LMK40LUU	6	1570	60	154	40	96	25	-10	3430	8040	0 - (-15)



KH Series - Compact (Metric)

Part No.	Weight (g)	Dimensions			Basic Load Rating	
		D(mm)	L (mm)	B (mm)	Dynamic C (N)	Static Co (N)
KH0622PP	7	12	22	6	400	239
KH0824PP	12	15	24	8	435	280
KH1026PP	14.5	17	26	10	500	370
KH1228PP	18.5	19	28	12	620	510
KH2030PP	32.5	28	30	20	950	790
KH2540PP	66	35	40	25	1990	1670
KH3050PP	95	40	50	30	2800	2700
KH4060PP	182	52	60	40	4400	4450