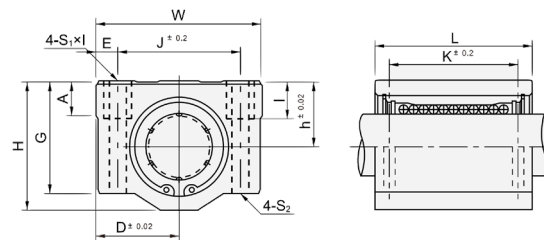


## LME Series - European Standard (Metric)

Part No.	Ball Circuit	Weight (g)	Dimensions			Tolerance
			D(mm)	L (mm)	B (mm)	Precision P
LME8UU	4	20	16	25	8	(+8) - 0
LME10UU	4	29.5	19	29	10	(+8) - 0
LME12UU	4	41	22	32	12	(+8) - 0
LME16UU	5	57	26	36	16	(+9) - (-1)
LME20UU	5	91	32	45	20	(+9) - (-1)
LME25UU	5	215	40	58	25	(+11) - (-1)
LME30UU	6	325	47	68	30	(+11) - (-1)
LME40UU	6	705	62	80	40	(+13) - (-2)



## SCE...UU

## SCE Bearing Units Series - European Standard (Metric)

Part No.	Linear Bearing	Dimensions												Basic Load Rating		Weight (g)
		h	D	W	H	G	A	J	E	S1x1	S2 (dia mm)	K	L	Dynamic C (N)	Static Co (N)	
SCE16UU	LME16UU	19	25	50	38.5	32.5	9	36	7	M5x12	4.3	34	44	770	1170	180
SCE20UU	LME20UU	21	27	54	41	35	11	40	7	M6x12	5.2	40	53	860	1370	245
SCE25UU	LME25UU	26	38	76	51.5	42	12	54	11	M8x18	7	50	67	980	1560	550
SCE30UU	LME30UU	30	39	78	59.5	49	15	58	10	M8x18	7	58	76	1560	2740	760
SCE40UU	LME40UU	40	51	102	78	62	20	80	11	M10x25	8.7	60	90	2150	4010	1700

## Linear Shaft - Metric

Dia (mm)	Length (m)	
8	1	2
10	1	2
12	1	2
16	1	2
20	1	2
25	1	2
30	1	2
40	1	2

## Linear Shaft Support

Part No.
WK-8
WK-10
WK-12
WK-16
WK-20
WK-25
WK-30
WK-35
WK-40