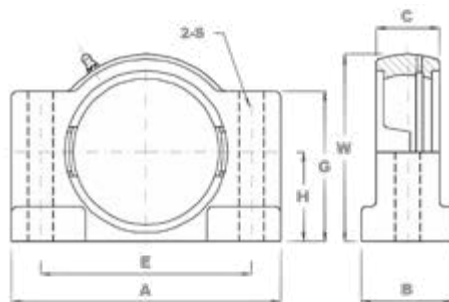


SBH200 Series

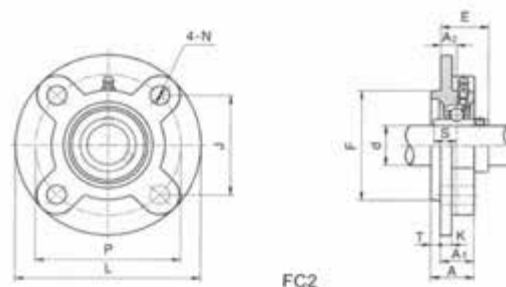
Heavy 2-Bolt Saw Bench Housing



| Part No. | Dimensions (mm) | | | | | | | | | Weight (kg) |
|----------|-----------------|-----|-----|----|----|-----|-----|----|------|-------------|
| | H | A | E | B | C | G | W | S | Bolt | |
| SBH205 | 31.7 | 92 | 70 | 38 | 25 | 58 | 67 | 12 | M10 | 0.75 |
| SBH206 | 38.1 | 108 | 83 | 44 | 30 | 68 | 78 | 12 | M10 | 1.20 |
| SBH207 | 44.4 | 133 | 102 | 48 | 33 | 76 | 95 | 14 | M12 | 1.90 |
| SBH208 | 47.6 | 140 | 108 | 54 | 39 | 81 | 100 | 14 | M12 | 2.10 |
| SBH209 | 50.8 | 146 | 111 | 54 | 39 | 86 | 105 | 14 | M12 | 2.40 |
| SBH210 | 53.97 | 152 | 118 | 60 | 41 | 90 | 110 | 14 | M12 | 2.70 |
| SBH211 | 58.7 | 172 | 137 | 60 | 41 | 98 | 122 | 17 | M16 | 3.50 |
| SBH212 | 69.85 | 197 | 162 | 65 | 48 | 111 | 146 | 17 | M16 | 5.02 |
| SBH213 | 69.85 | 197 | 162 | 65 | 48 | 111 | 146 | 17 | M16 | 4.64 |
| SBH214 | 76.2 | 206 | 172 | 73 | 60 | 117 | 155 | 17 | M16 | 5.21 |
| SBH215 | 76.2 | 206 | 172 | 73 | 60 | 117 | 155 | 17 | M16 | 5.78 |

FC200 Series (Light Duty)

4-Bolt Round Flanged Cartridge Housing



| Part No. | Dimensions (mm) | | | | | | | | | | | | | N.W. (kg) |
|----------|-----------------|-----|-----|-------|----|------|------|----|----|-----|----|------|------|-----------|
| | d | L | P | J | A2 | A1 | A | T | K | F | N | E | S | |
| FC204 | 20 | 100 | 78 | 55.1 | 10 | 20.5 | 25.5 | 5 | 7 | 62 | 12 | 28.3 | 12.7 | 0.58 |
| FC205 | 25 | 115 | 90 | 63.6 | 10 | 21 | 27 | 6 | 7 | 70 | 12 | 29.8 | 14.3 | 0.74 |
| FC206 | 30 | 125 | 100 | 70.7 | 10 | 23 | 31 | 8 | 8 | 80 | 12 | 32.2 | 15.9 | 0.93 |
| FC207 | 35 | 135 | 110 | 77.8 | 11 | 26 | 34 | 8 | 9 | 90 | 14 | 36.4 | 17.5 | 1.2 |
| FC208 | 40 | 145 | 120 | 84.8 | 11 | 26 | 36 | 10 | 9 | 100 | 14 | 41.2 | 19 | 1.41 |
| FC209 | 45 | 160 | 132 | 93.3 | 10 | 26 | 38 | 12 | 14 | 105 | 16 | 40.2 | 19 | 1.95 |
| FC210 | 50 | 165 | 138 | 97.6 | 10 | 28 | 40 | 12 | 14 | 110 | 16 | 42.6 | 19 | 2.12 |
| FC211 | 55 | 185 | 150 | 106.1 | 13 | 31 | 43 | 12 | 15 | 125 | 19 | 46.4 | 22.2 | 3.05 |
| FC212 | 60 | 195 | 160 | 113.1 | 17 | 36 | 48 | 12 | 15 | 135 | 19 | 56.7 | 25.4 | 3.57 |
| FC213 | 65 | 205 | 170 | 120.2 | 16 | 36 | 50 | 14 | 15 | 145 | 19 | 55.7 | 25.4 | 3.74 |
| FC214 | 70 | 215 | 177 | 125.1 | 17 | 40 | 54 | 14 | 18 | 150 | 19 | 61.4 | 30.2 | 4.8 |
| FC215 | 75 | 220 | 184 | 130.1 | 18 | 40 | 56 | 16 | 18 | 160 | 19 | 62.5 | 33.3 | 5.2 |
| FC216 | 80 | 240 | 200 | 141.4 | 18 | 42 | 58 | 16 | 18 | 170 | 23 | 67.3 | 33.3 | 6.3 |
| FC217 | 85 | 250 | 208 | 147.1 | 18 | 45 | 63 | 18 | 20 | 180 | 23 | 69.6 | 34.1 | 7.37 |
| FC218 | 90 | 265 | 220 | 155.5 | 22 | 50 | 68 | 18 | 20 | 190 | 23 | 78.3 | 39.7 | 8.6 |